

# Chivalry

*DS 2 Cara Sheng*



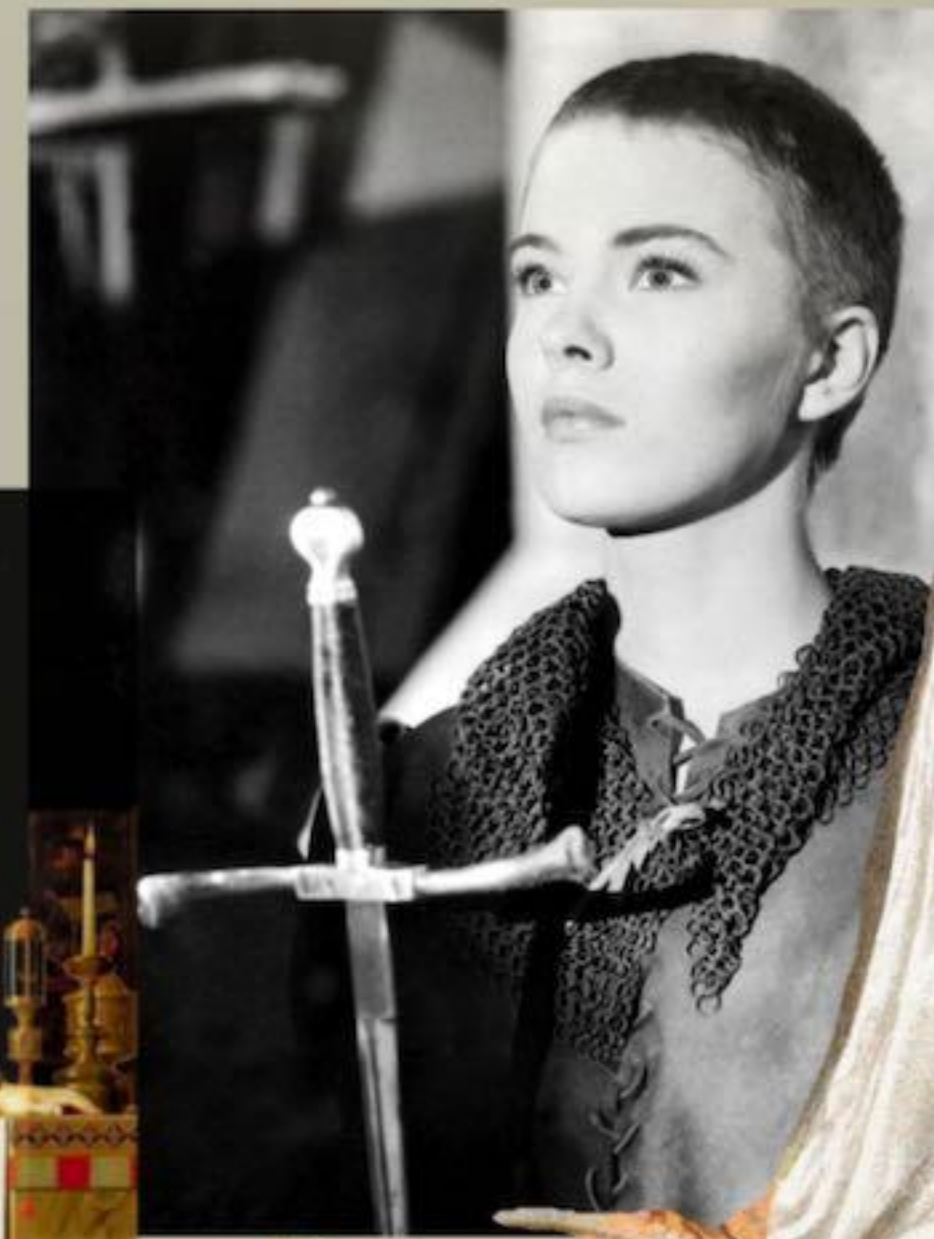
# Design Project Statement

*My muse is "chivalry", a word that originated in medieval Europe and is mostly used to describe men. In chivalric literature with male protagonists, women were often portrayed as pure, delicate, virtuous maidens waiting to be rescued by heroic knights. Therefore, I would like to challenge the gender norms of the medieval period by giving women equal power as men. Secondly, I will look at the famous female knight Joan of Arc as an example of the fluidity of female identity. Lastly, I will break gender stereotypes in my design by giving women different identities and interpreting the new medieval fashion for women.*



# Historical Research

*Joan of Arc broke the gender norms for women in medieval Europe and is an excellent example of empowering women. Born around 1412 in a small village in northeastern France, Joan of Arc's life before she became a warrior was dominated by agriculture. According to historical records, she often herded sheep in nearby fields as a teenager. Later Joan claimed to have received divine visions and guidance instructing her to help expel the English from French territory, whereupon Joan made a great contribution to the liberation of Orleans in 1429. As a result, she became known as the Virgin and became a symbol of courage, faith and resilience.*



## Societal Research

*Throughout the medieval period, women were regarded as second-class citizens and their needs were always an afterthought. Women were mostly denied power or a voice; men made decisions for them and their lives were determined by the men who ran society. Laws and cultural practices usually consider women to be the property of their close male relatives, and their actual social status depends on the status of their fathers or husbands.*

*Although women in medieval literature appeared in various forms, authors usually preferred to make women subservient to men and emphasized their inferiority to men. For example, a virgin would be portrayed as passive and weak, and the mother's corner of her life would always revolve around creating a better life for her family, especially for her husband. Or even the prostitute, who has no power in her sexuality and must give up her bodily autonomy for the well-being of her family or the man in society. These roles are usually mired in passivity and side-step the status of women in medieval Europe.*



# Muse Profile



## *Lifestyle:*

*Chivalry embodies a way of life rooted in honor, courtesy and valor. It follows a code of conduct that emphasizes loyalty, bravery and respect, especially for women and the less fortunate. This way of life is often characterized by noble pursuits, such as protecting the weak and upholding justice, as well as demonstrating courtesy and politeness in all dealings.*

## *Personality Traits:*

*Chivalry exudes a demeanor of grace, courtesy, and valor. They are characterized by their unwavering courage, loyalty, and humility. Their gentle manners are juxtaposed with their unyielding resolve in the face of adversity. Chivalry is a beacon of generosity and compassion, always ready to lend aid to those in need. Chivalry is a beacon of generosity and compassion, always ready to lend aid to those in need.*

## *Values and beliefs:*

*Chivalry celebrates honor, duty, and selflessness. They believe in the importance of serving others, especially the disadvantaged and oppressed. Their moral compass is the principles of fairness, justice and compassion. Chivalry's code of conduct prioritizes the well-being and dignity of all people, regardless of their station in life.*

# Muse Profile

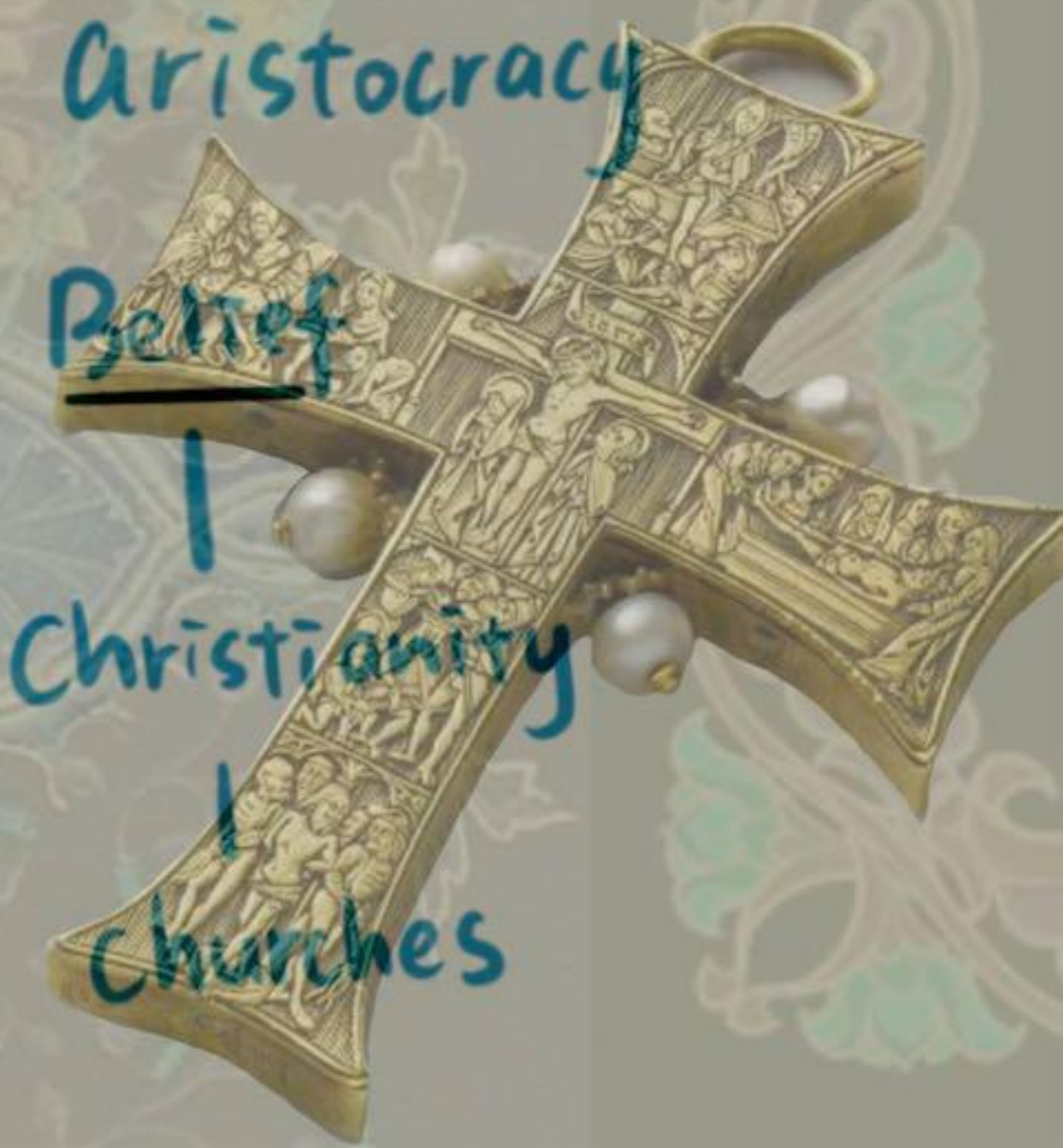


## *Analysis:*

*Chivalry began as an exclusive code of conduct for knights, emphasizing their duty to their lords, fellow knights and the Church. Trying to challenge medieval gender norms was nearly impossible, largely because the broadly patriarchal context of medieval society limited the extent to which these ideals could be realized in practice. In medieval Europe, women were often relegated to passive roles, seen as objects of admiration or prizes to be won, rather than active participants in the ideals of chivalry.*

*Fortunately as society has progressed, modern chivalry has managed to challenge traditional gender stereotypes and promote a more inclusive and expansive understanding of both men and women. It encourages men to express emotion, embrace vulnerability, and reject toxic machismo, while empowering women to pursue their goals and ambitions without socially imposed restrictions. It encourages men to express emotion, embrace vulnerability, and reject toxic masculinity, while empowering women to pursue their goals and ambitions without the constraints imposed by societal expectations.*

# Mind Map



**Chivalry**

Middle Age

South of France

Europe

Woman - John of Arc

Class - upper class

Aristocracy

Belief

Christianity

Churches

Responsibility

defending church and country

loyalty to faith

respect the monarch

Knight

dress & features

chain mail

helmets

Armor

Swords

dragners

robe

respect for woman

gentleman

Justice tolerance

friendly

Adhere to honor

humility

Role model

Education Standard

Nowadays

become a compliment

# Moodboard

*In Medieval Europe, the white lily was symbolic of purity of the soul and chastity.*





# Materiality Story & Fabric



*Symbol of Faith*



*Symbol of Royalty*



*Wool*

*Poly Satin*



*Slik & Nylon*



*Stretch Satin*

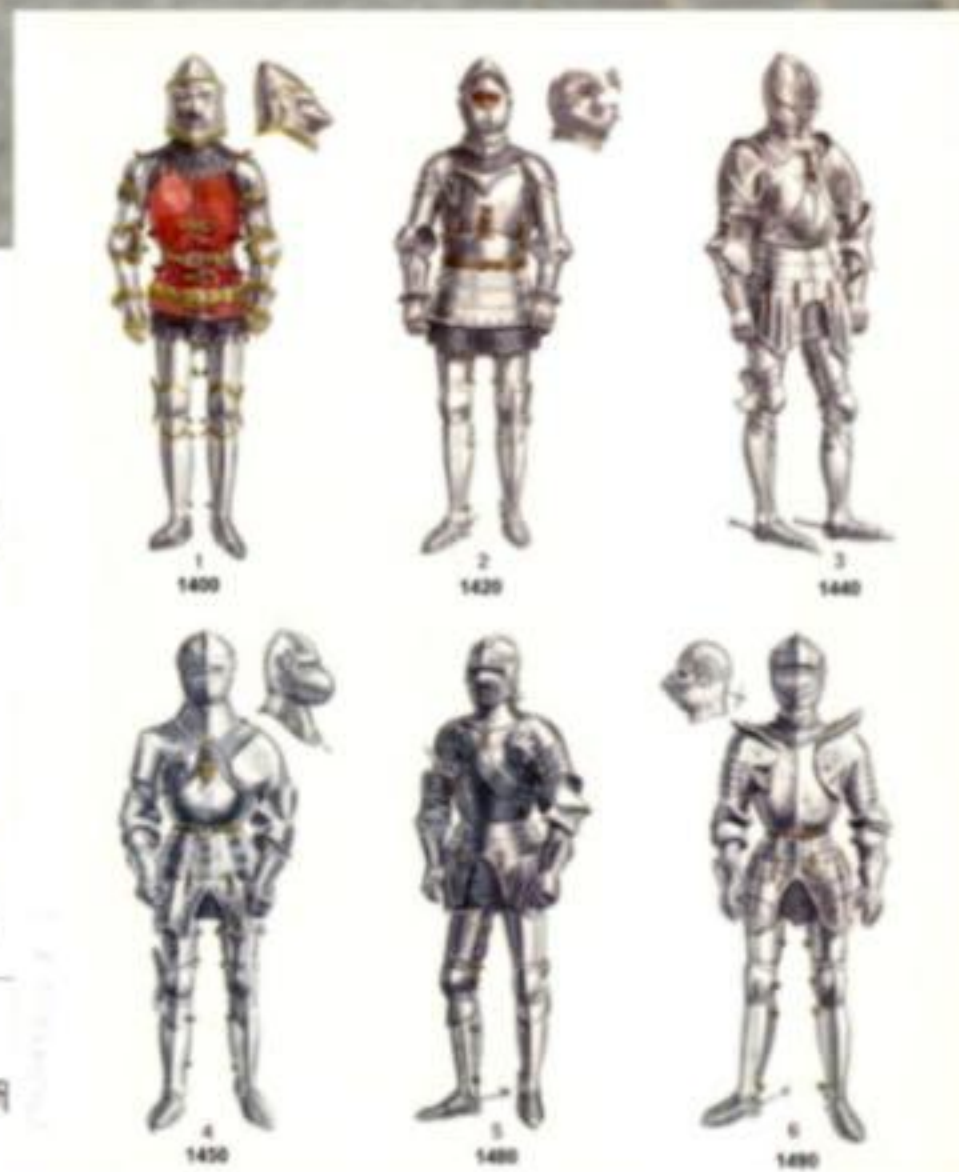
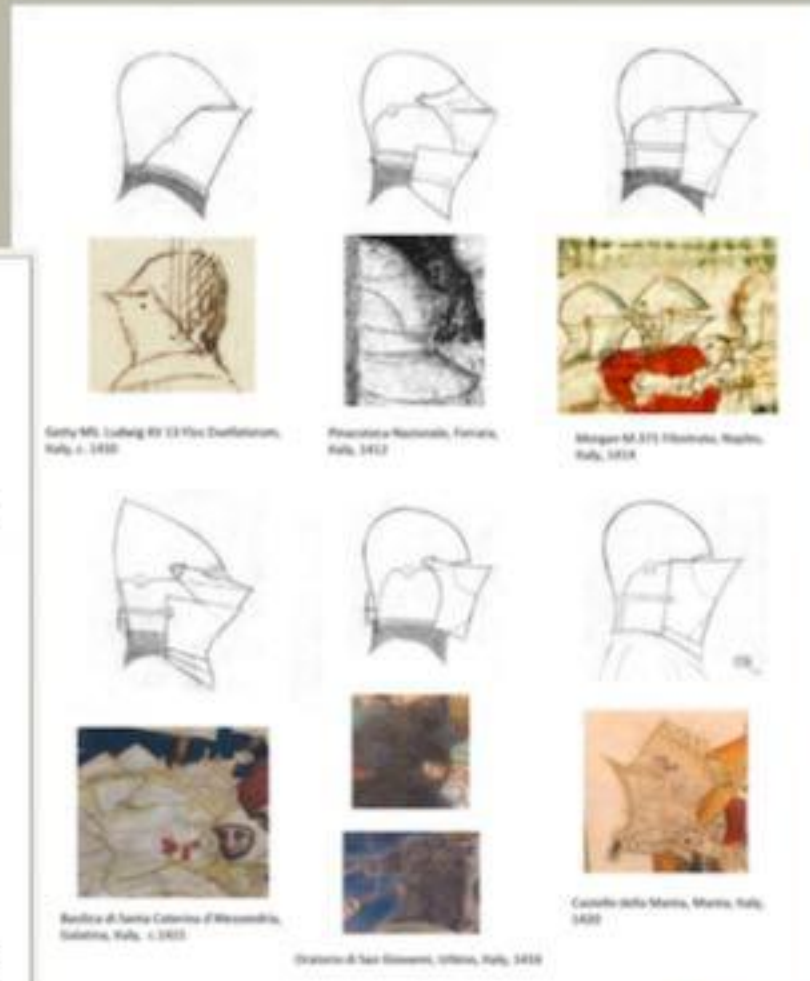


*Silk Satin*



*Slik Wool*

# Clothing Research



Doublet



**ARM ARMOUR IN ITALY DURING THE XIVTH CENTURY**  
BY AUGUSTO BOKER BRONT

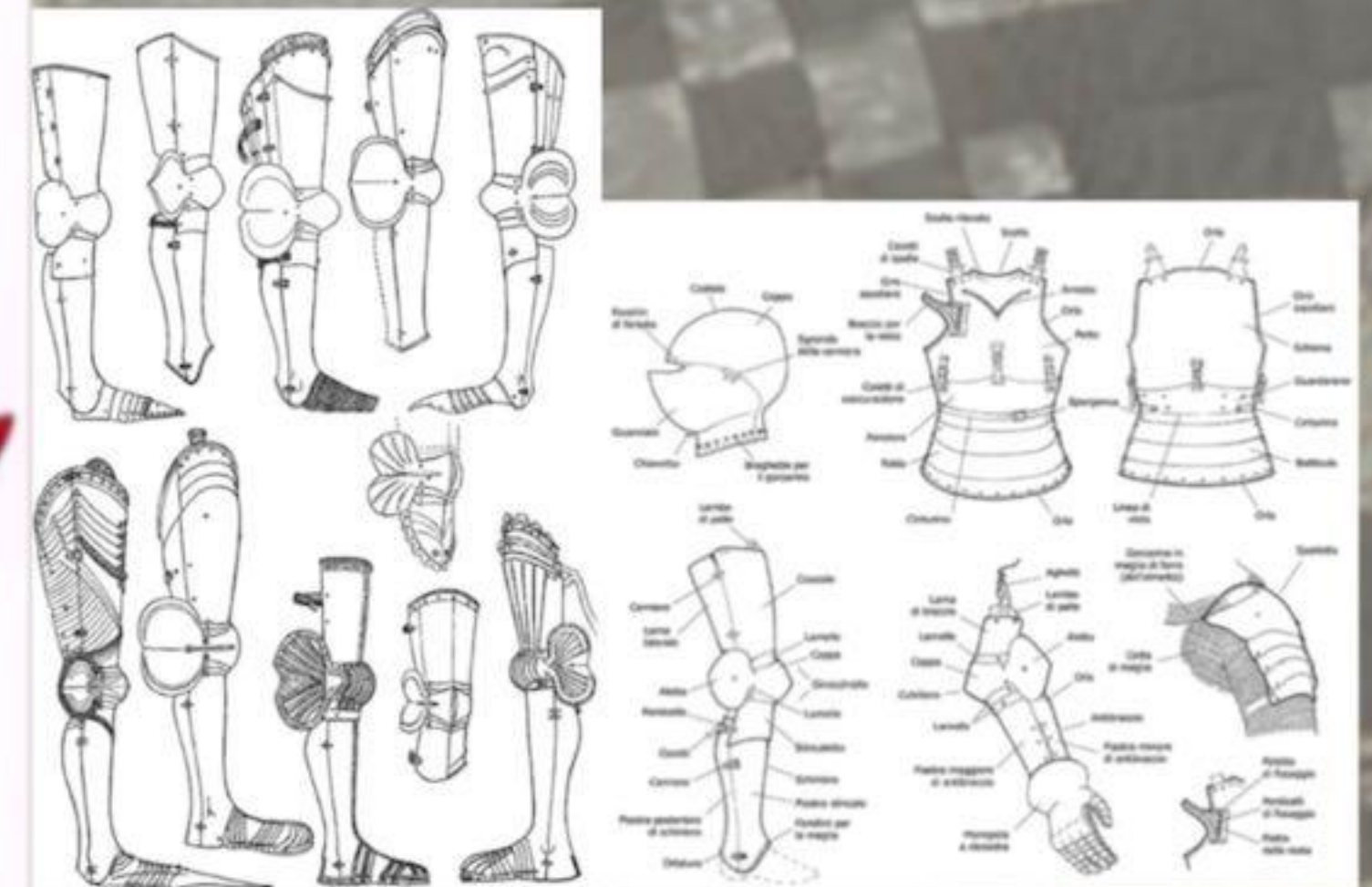
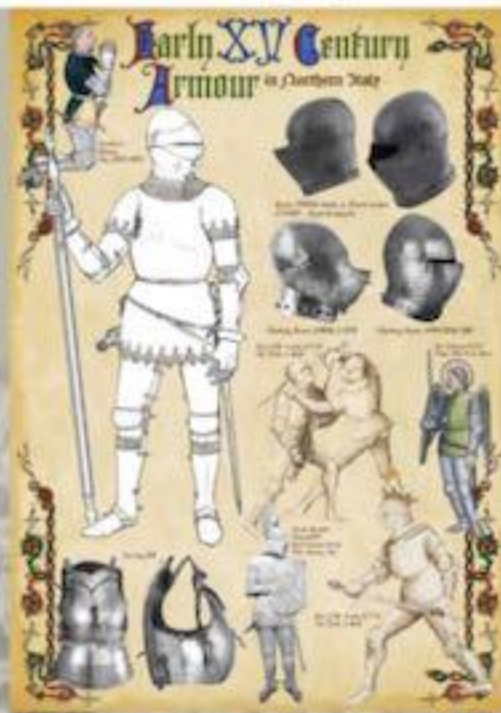
I	II	III	IV	V	VI	VII	VIII	IX	X	
1250	1282	1300	1315	1320	1325	1340	1340	1340	1340	
1330	1350	1370	1373							
XI	XII	XIII	XIV	XV	XVI	XVII	XVIII	XIX	XX	
1340	1345	1350	1353	1360	1363	1363	1365	1365	1369	
					1365	1368		1410		
XXI	XXII	XXIII	XXIV	XXV	XXVII	XXVII	XXVIII	XXIX	XXX	XXXI
1370	1370	1370	1371	1374	1380	1380	1380	1384	1385	1400
				1390				1407		



# Clothing Research

Timeline of surviving XVth century Italian cuirasses, including export (\*) ones by Augusto Boer Bront

1430-1435	1438-1440	1445-1450	1450	1451*	1450-1460	1455*	1460-1465*	1460-1470
12.45 kg missing the mail skirt	10.08 kg missing the mail skirt and tassets	15.36 kg missing a tasset, much heavier than the other cuirasses since it's for a much bigger person	12.11 kg missing the mail skirt	7.67 kg missing back fauld, tassets and mail skirt	13.6 kg missing the mail skirt	8.34 kg missing back fauld and mail skirt		
1465-1470*	1465-1470*	1470-1480	1476*	1480-1490	1490-1500*	1510	1510	1510
6.4 kg missing tassets and mail skirt, weight of the backplate not available	7.25 kg missing the tassets	9.8 kg	8.68 kg missing back fauld and tassets	8.31 kg missing tassets and mail skirt				



# Clothing Research



Houppelande



Butterfly



Long Sleeve - Cotte  
Short Sleeve - Cottehardi



Horned



Heart-Shaped



Tippet



Houppelande

# Clothing Research



Burgundian Gown



Crispin



Hennin Hat



Gammurra



Sleeve

Coote



Mantel

Surcote



# Fitting



# Draping

Checkered pattern



Shawls



Back



Battle-damaged armor



Sign of the cross



Voluminous skirt



Rose-shaped armor



Back



Back



Sleeveless



Adding volume to the hips (Inspired by tasset)



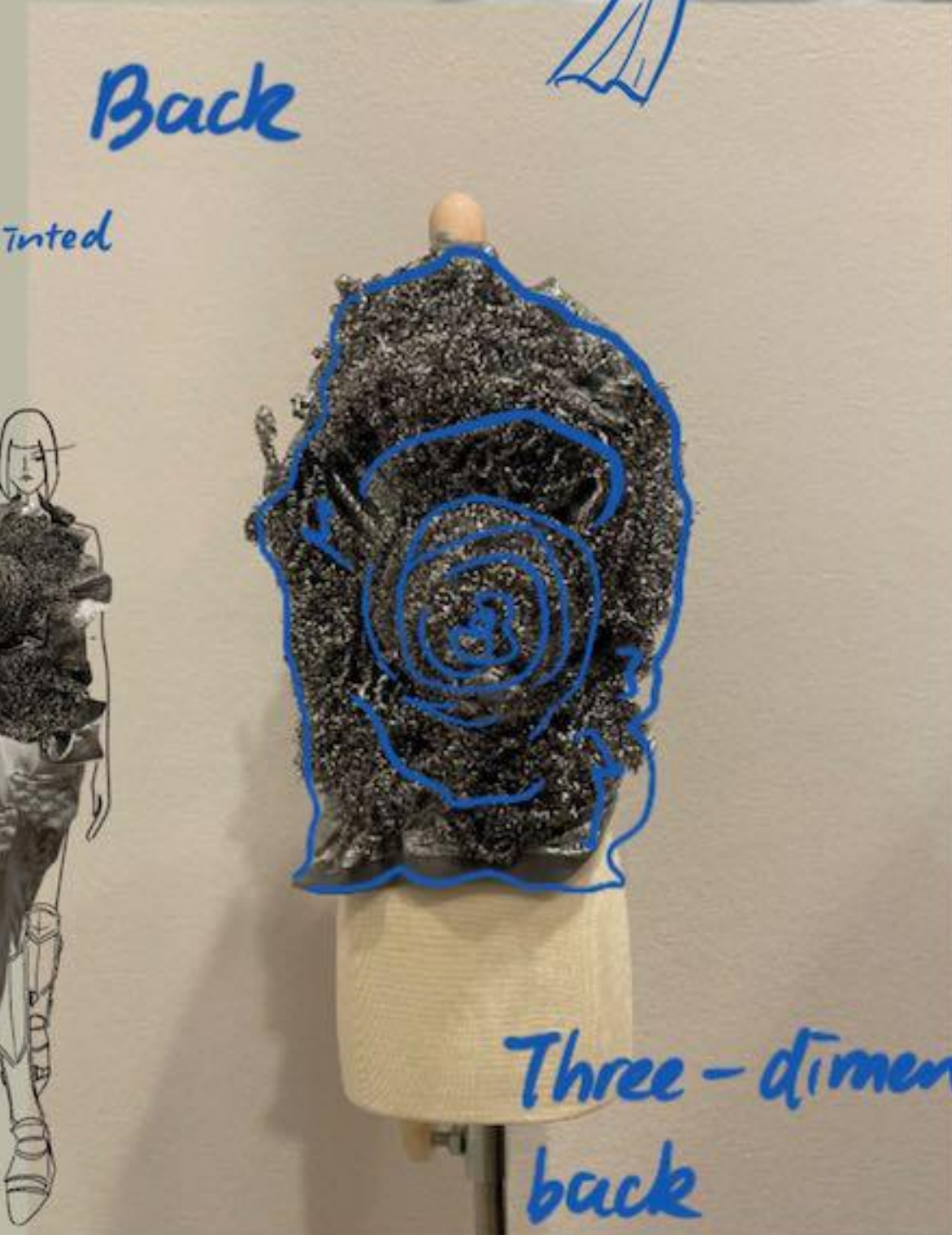
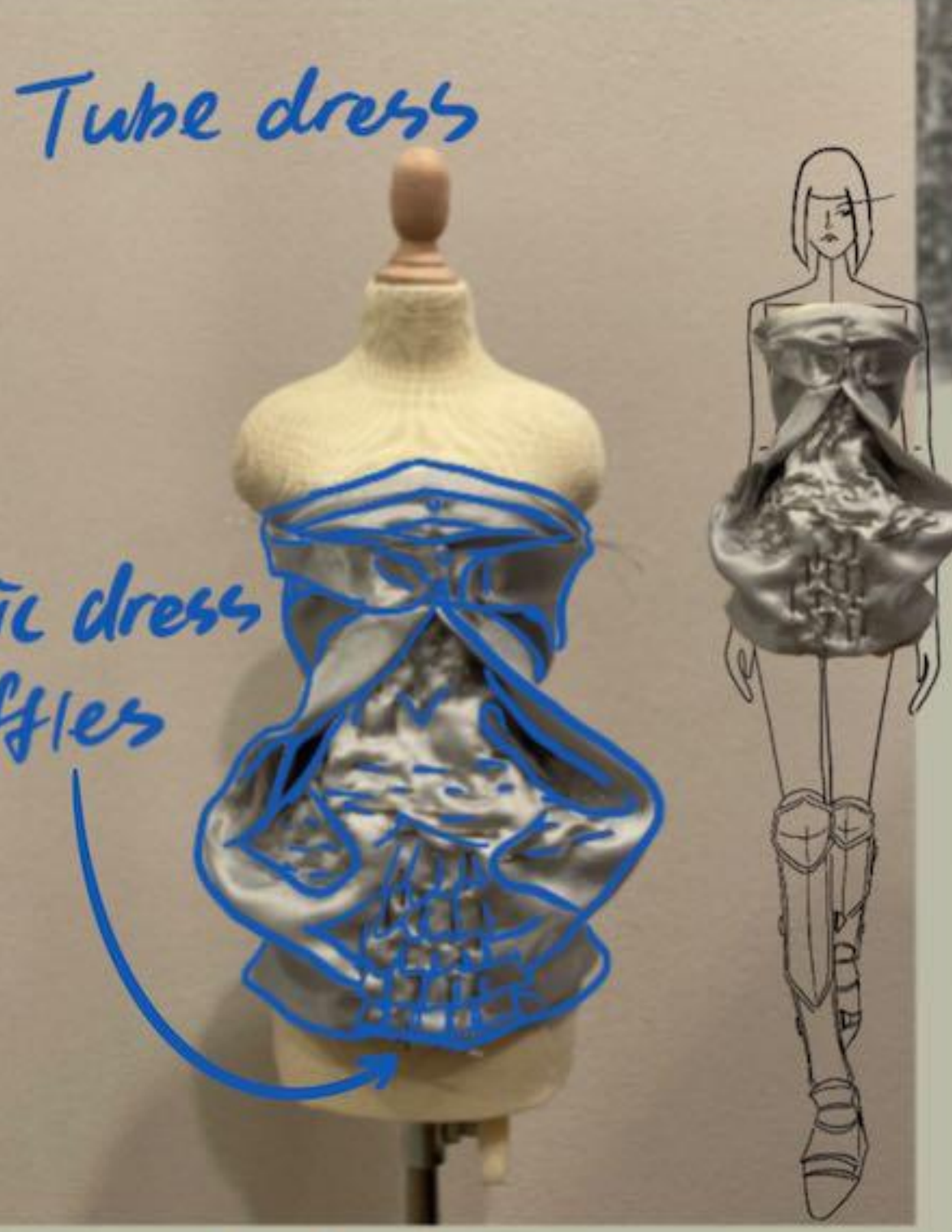
Inspired by Houppelande's sleeve



Cross



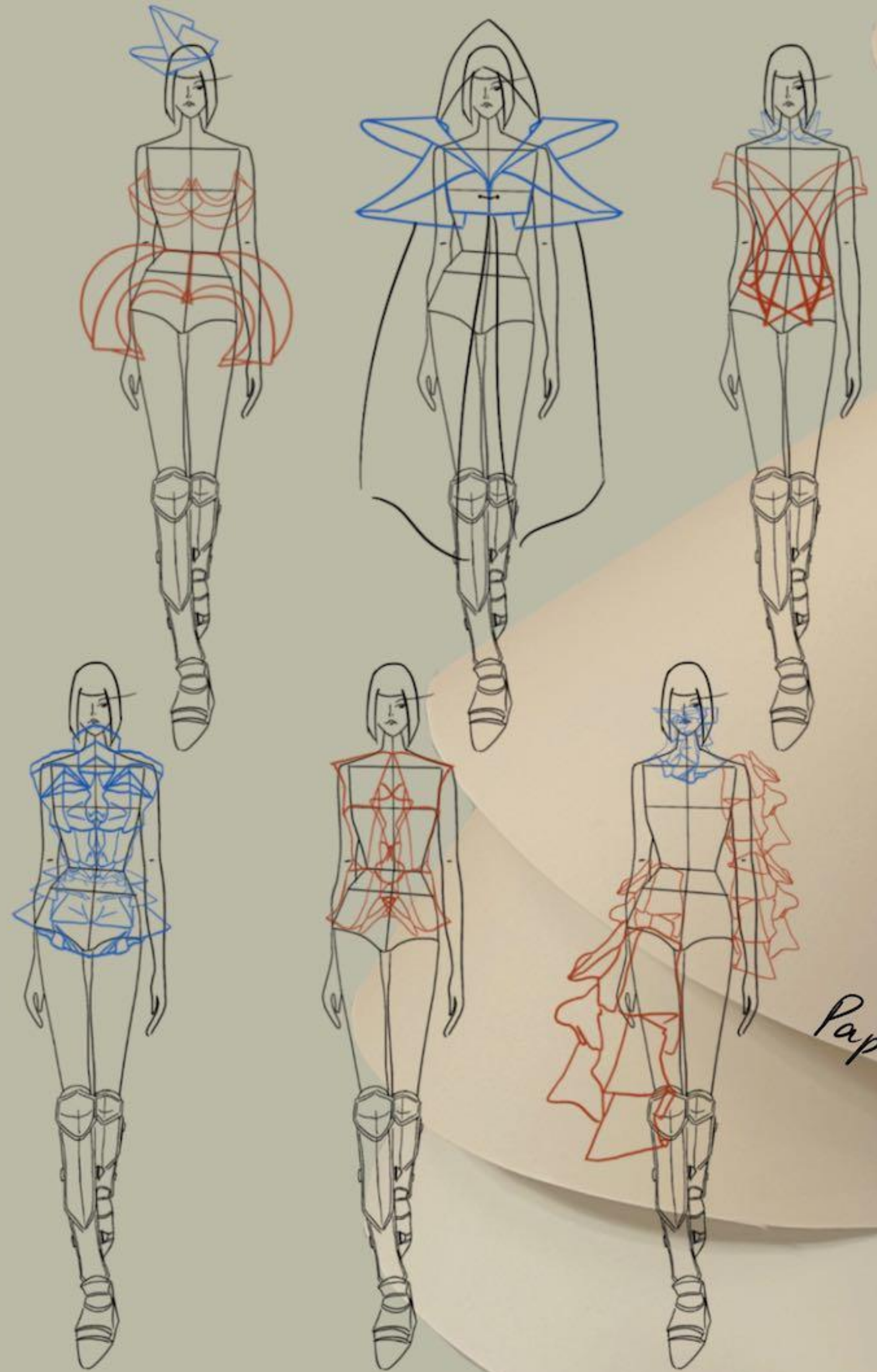
# Draping



Chains



# Draping



*Paper Armor*

# Preliminary Sketches



# Final Line Up



# Final Line Up



# Final Line Up



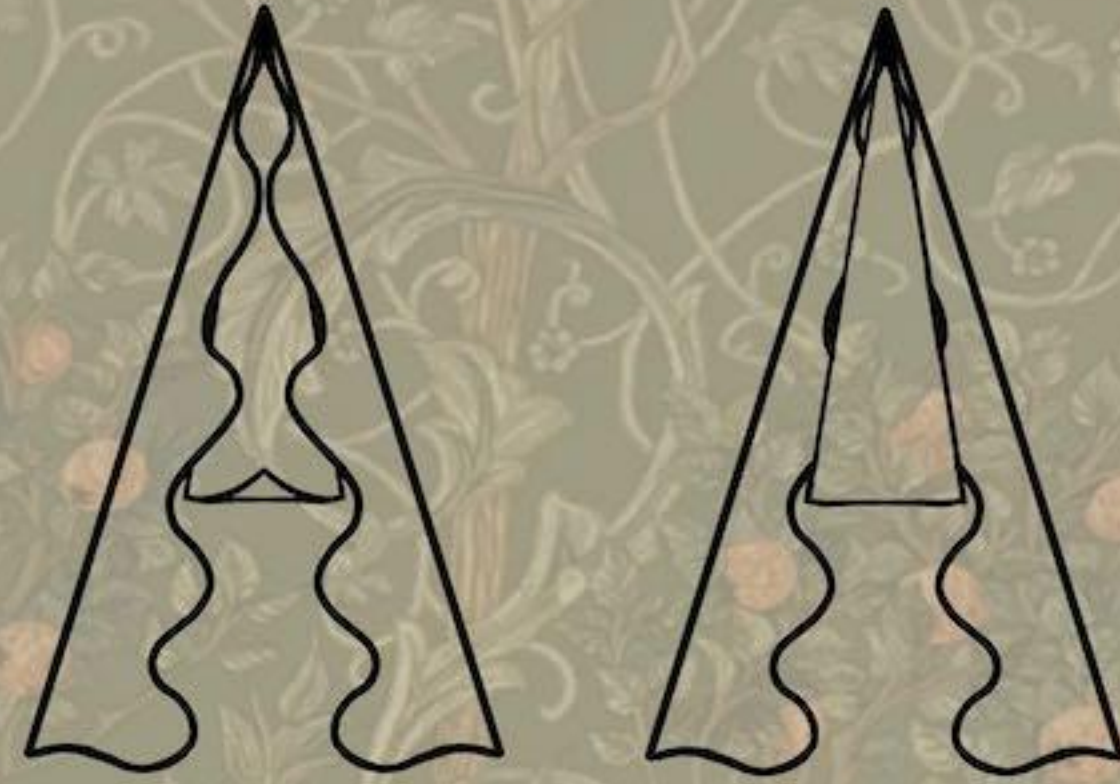
# Flats



# Flats

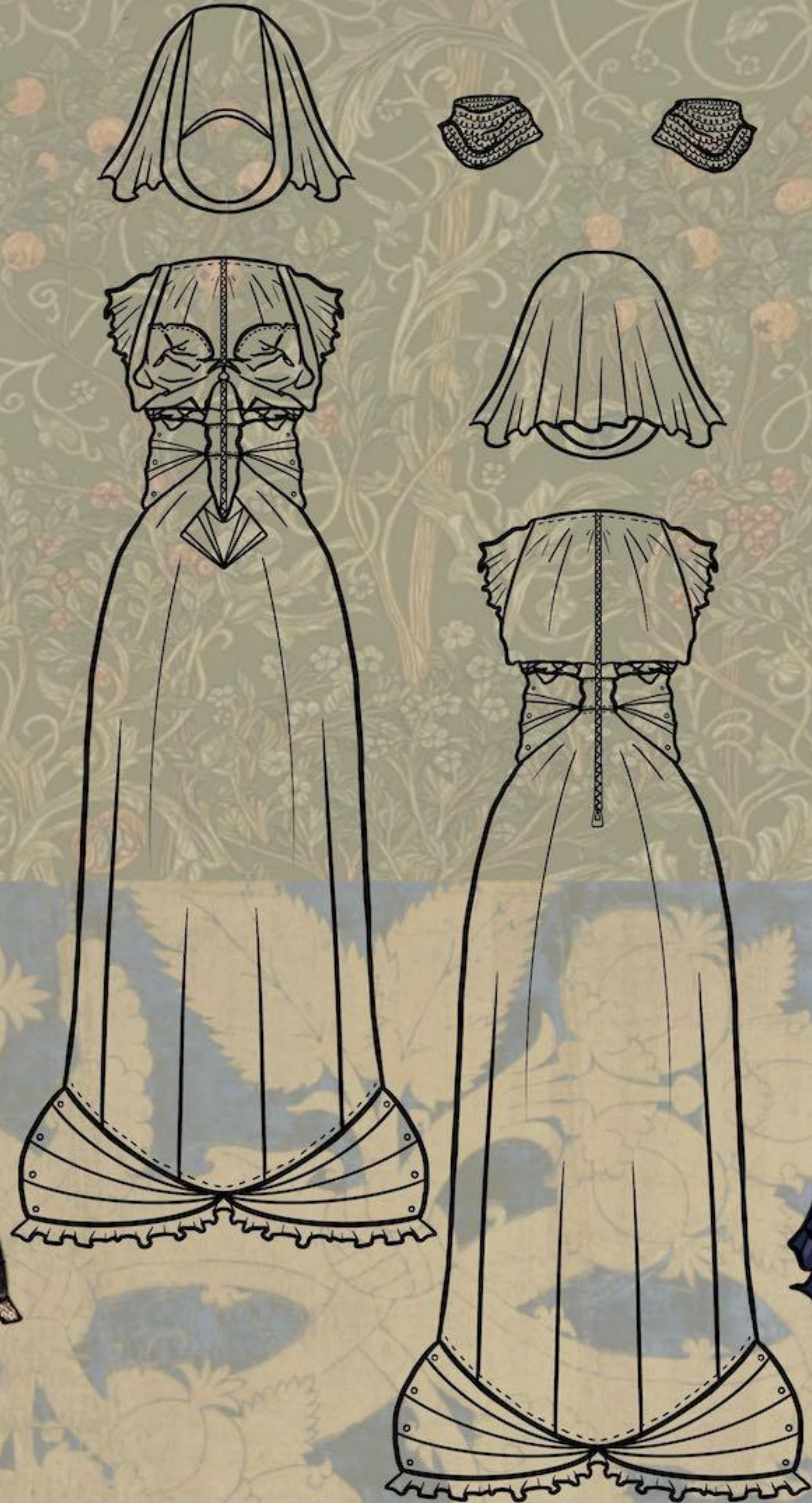


# Flats





# Flats



# Flats

